

**KOROK®**

# **CEILING AND BULKHEAD SYSTEMS INSTALLATION GUIDE**



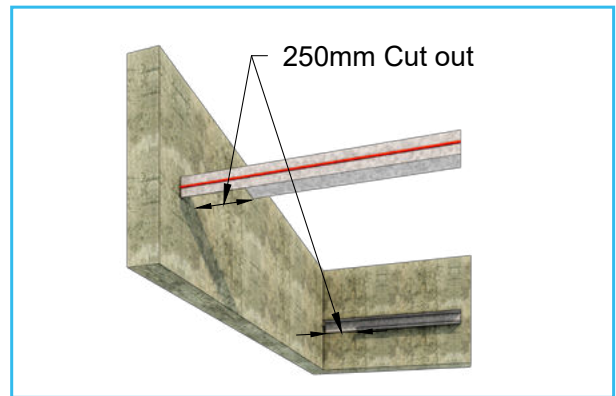
**May 2026  
Version 2**

**KOROK** 

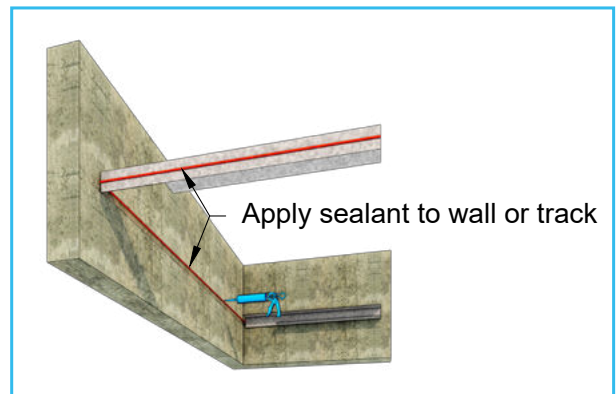


# INSTALLATION

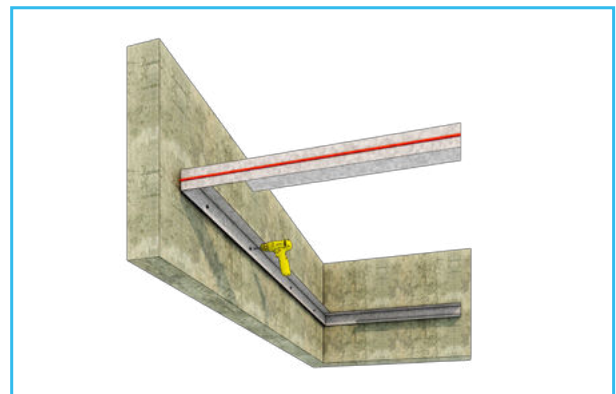
- 1** Confirm KOROK® ceiling system.
- 2** Confirm junction details based on FRR and supporting structure.
- 3** Confirm C-track and angle requirements:  
Spans greater than 1.2 m: 2.0 mm BMT KOROK® C-track and angles  
Spans less than 1.2 m: 1.15 mm BMT KOROK® C-track and up to 2.0 mm BMT
- 4** The KOROK® ceiling panel requires the perimeter C-track and/or perimeter angles to be fixed to the supporting structure; KOROK® walls, concrete/masonry, or structural steel.
- 5** Plan the set out, and the location of the close off panel (see Step 13). Cut the C-track and angle to suit.



- 6** To ensure the C-track is sealed to the structure, a continuous bead of fire sealant is run around the perimeter before the C-track or angle sections are laid and fixed.  
Or the sealant can be applied directly to the C-track or angles before fixing in place.



- 7** Pre-drill the C-track and/or angle sections as required.
  - Fixings into concrete/masonry at maximum 400 mm centres.
  - Fixings into KOROK® wall panel joints at 250 mm centres.
  - Fixings into steel shall be as per the engineers details, and shall not exceed 400 mm centres.

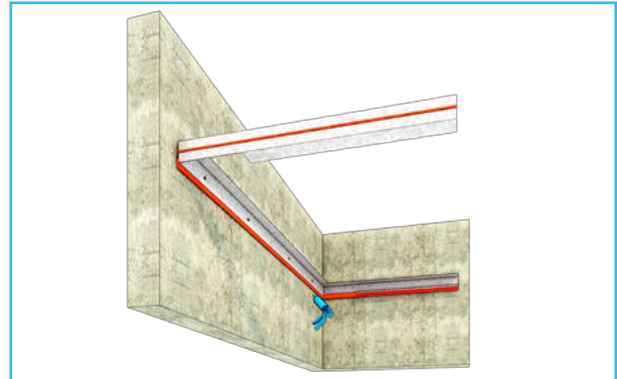


# INSTALLATION

**8** Secure the C-tracks and angles to the supporting structure.

If the surrounding surface is uneven add a continuous bead of sealant around the perimeter of the C-track where it contacts the surrounding surface.

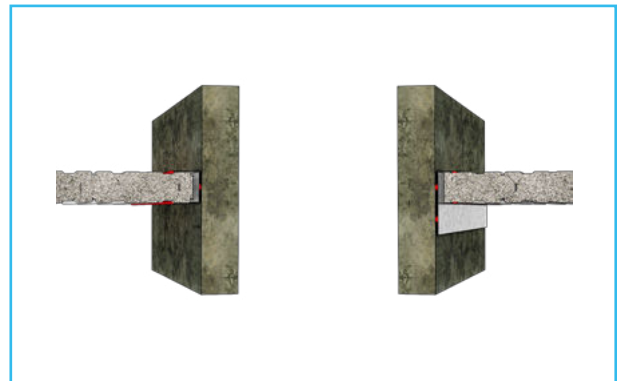
KOROK® Fire Rated Sealant shall be applied at the locations as indicated on the ceiling system junction details.



**9** Prepare the KOROK® panels.

Cut the KOROK® ceiling panel lengths between 20 mm and 30 mm shorter than the structural opening to allow for fitting. The gap at each end must not exceed 15 mm. The male nose section of a panel can be cut off and placed into the female end of the starter panel. Alternatively, the cut edge of a starter panel can be installed.

The KOROK® panel can be cut to length and width using a radial saw with dust extraction. Diamond cutting discs are recommended for radial saws.



**10** Install the KOROK® panels.

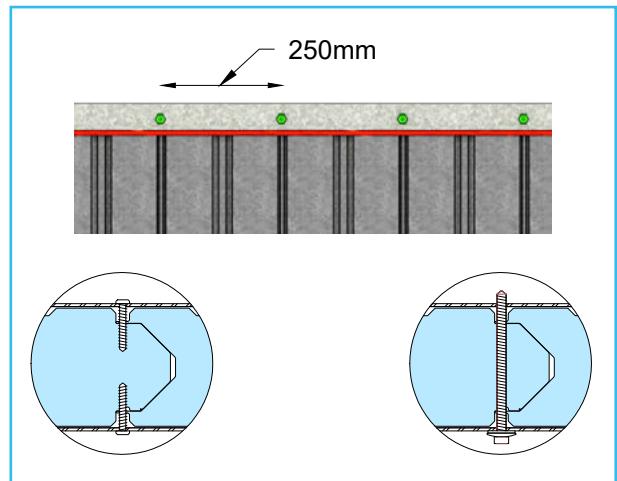
Where panels are supplied with protective film, remove the film from the non-accessible face prior to installation.

On the exposed face, pull back approximately 300 mm of film at each end of the panel before placing the panel into the C-track.

The first panel is to be installed square into the parallel side C-track. Screw fix the panel into place at 400 mm centres to both sides of the parallel C-track with KOROK® PS Wafer Tek 10-16 x 16 mm C3 screws. Fit the remaining panels, coordinating with angle sections where applicable.

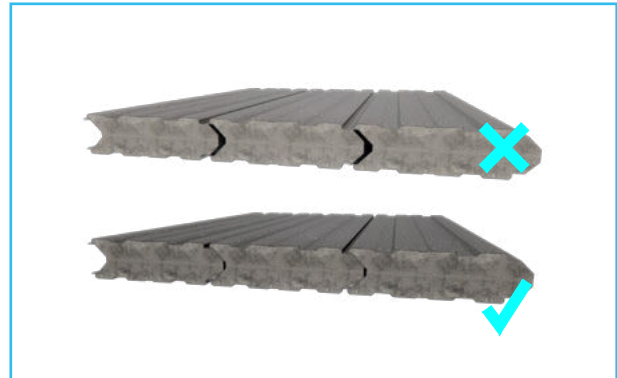


**11** Each additional KOROK® ceiling panel shall then be installed and fixed to the perimeter C-tracks at 250 mm centres into the panel joints using KOROK® PS Wafer Tek 10-16 x 30 mm C3 screws or KOROK® Tek Hex head 12g x 35 mm C4 screws on both sides, or one-sided fixing with KOROK® Tek Hex head 14g x 100-115 mm C4 screws.



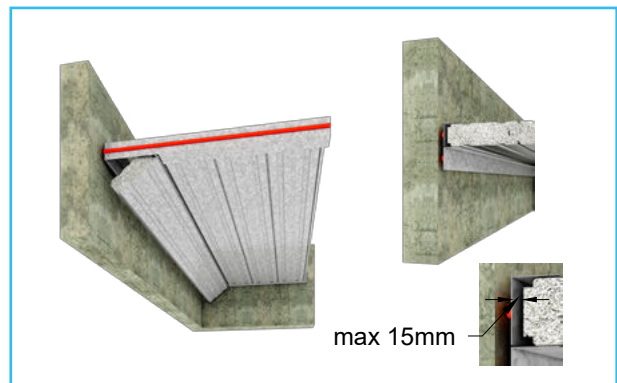
# INSTALLATION

**12** Ensure the panels are installed together correctly to maintain the fire and acoustic performance. Remove strippable film at the end of each day's work.

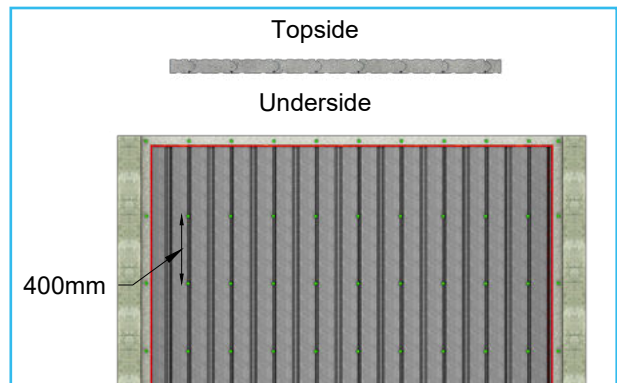


## 13 LAST PANEL

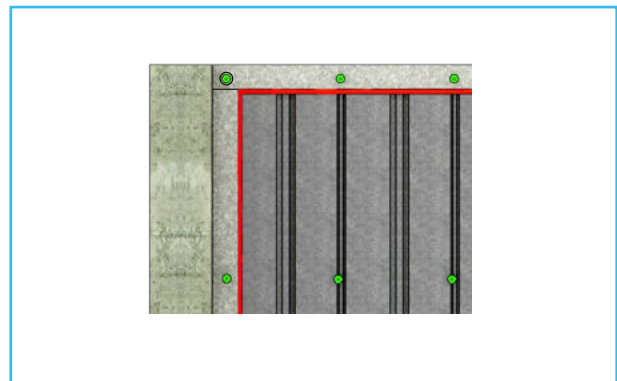
Ensure KOROK® Fire rated sealant is applied as per the relevant junction detail. Install the last panel using a tilt and push action. Install the secondary 60 x 50 mm KOROK® angles to the supporting structure. The screw fixing of the angles to the KOROK® panel shall be at 400 mm centres. Fixings shall be in accordance with the junction details.



**14** Panel to panel screw fixing is required. Screw together into every panel joint spaced at 400 mm maximum centres to the underside of the ceiling using KOROK® PS Wafer Tek 10-16 x 16 mm C3 screws.

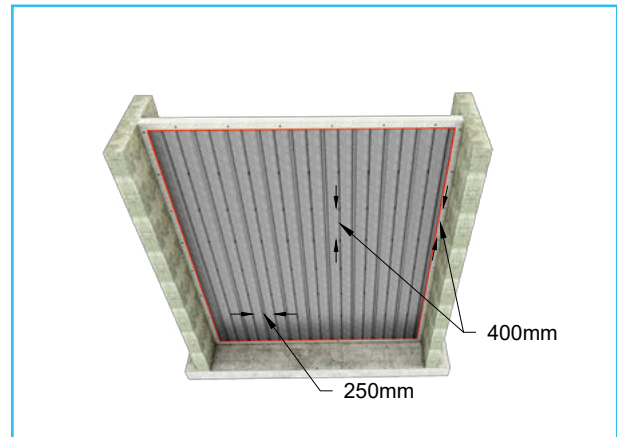


**15** At corners where the two lengths of the KOROK® C-track intersect, the two pieces must be fixed to each other with at least one KOROK® PS Wafer Tek 10-16 x 16 mm or 30 mm C3 screw.

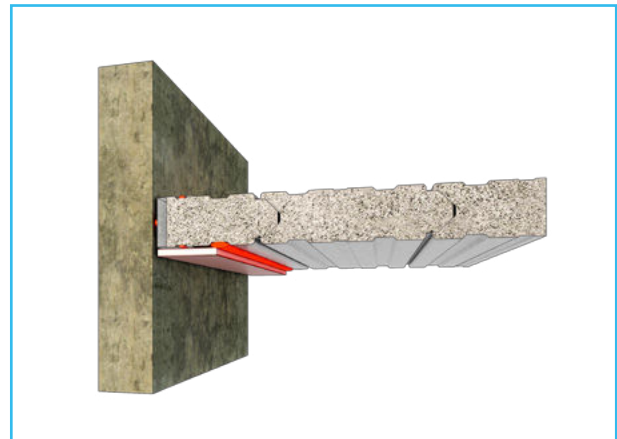


## INSTALLATION

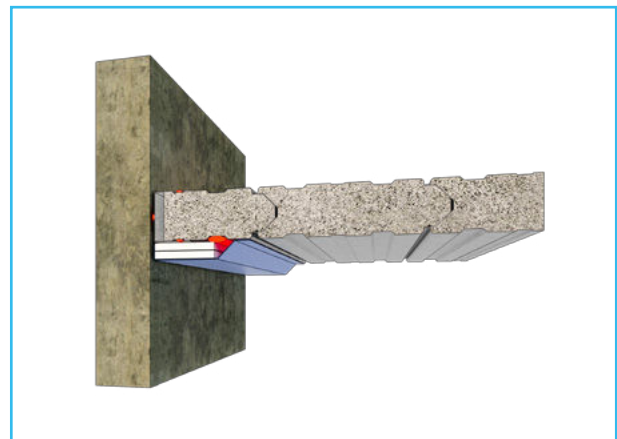
**16** Check all remaining fixings have been installed and apply a continuous bead of fire rated sealant between the KOROK® C-track and the KOROK® panels.



**17** Where edge track fire protection strips are required, they shall be screw fixed to the KOROK® perimeter with pairs of the board manufacturers system appropriate screws at 250 mm centres.



**18** Optional: KOROK® cover flashings can be installed.



### FINAL CHECK

At the completion of the job and at the finish of each day's work, it is essential that the completed area is thoroughly cleaned of all swarf, rivet stems, nails, drillings, screws etc. normally associated with the installation of metal KOROK® panels. Remove any remaining strippable film, check all fixings are correctly installed, all fire and acoustic sealant is applied correctly.

# KOROK® COMPONENTS SUMMARY

Product Image	Item Description
	<b>PN1318</b> KOROK® Panel 78mm Galv 400kg/m³ Gen2
	<b>PN1256</b> KOROK® C-track 60 x 80 x 60 mm 2.00 BMT
	<b>PN1140</b> KOROK® C-track 60 x 80 x 60 mm 1.15 BMT
	<b>PN1255</b> KOROK® C-track 90 x 80 x 90 mm 2.00 BMT
	<b>PN1258</b> KOROK® C-track 90 x 80 x 90 mm 1.15 BMT
	<b>PN1157</b> KOROK® MS Fire Seal
	<b>PN1161</b> KOROK® Acrylic Fire Seal
	<b>PN1281</b> KOROK® Angle Galv 60 x 50 x 2.00 BMT
	<b>PN1150</b> KOROK® Angle Galv 60 x 50 x 1.15 BMT
	<b>PN1249</b> KOROK® Joining plate 100 mm 2.00 BMT
	Cover flashing - manufactured to specified size

Product Image	Item Description
	<b>PN1313</b> KOROK® Tek Hex head 12g x 35mm C4
	<b>PN1178</b> KOROK® Tek Hex head 14-20 x 115mm C4
	<b>PN1182</b> KOROK® Tek Hex head 14-20 x 100mm C4
	<b>PN1343</b> Hilti Screw Anchor HUS3-H 6mm x 60mm
	<b>PN1346</b> Hilti Screw Anchor HUS4-H 8mm x 65mm
	<b>PN1170</b> KOROK® PS Wafer Tek 10-16 x 16mm C3
	<b>PN1171</b> KOROK® PS Wafer Tek 10-16 x 30mm C3



22 Norris Ave  
PO Box 20182  
Te Rapa, Hamilton  
0800 773 777  
[www.korok.com](http://www.korok.com)