

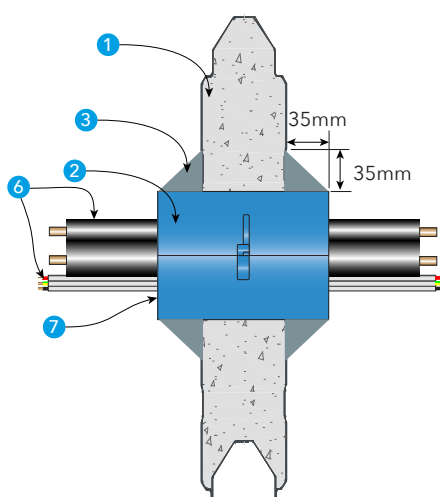
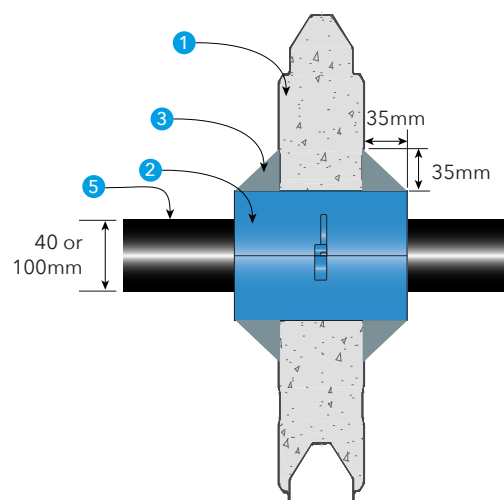
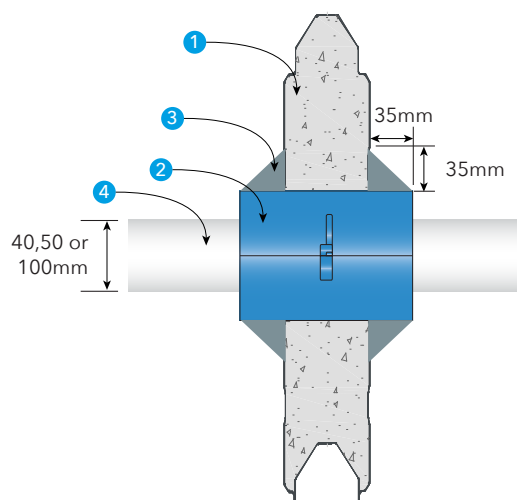
PROMASEAL[®] Service Penetrations

in KOROK[®] walls

This manual sets out the approved penetration seals using Promat products with KOROK[®] walls. All approvals are from BRANZ Test Report FR10185-001-02

Service	Product	FRL in KOROK [®] 30 min System	FRL in KOROK [®] 60 min System	Install #
40,50 & 100mm uPVC	PROMASEAL [®] Wall Collar (FCW40, FCW50 & FCW100)	-/90/30	-/90/60	1
40 & 100mm PE	PROMASEAL [®] Wall Collar (FCW40, FCW50 & FCW100)	-/90/30	-/90/60	1
1/4" & 1/2" PairCoil + Power cable	PROMASEAL [®] Wall Collar (FCW50) + PROMASEAL Grafitex (GRAF4T)	-/90/30	-/90/60	1
20mm PEX	Double PROMASEAL [®] Conduit Collar (CFC32)	-/90/30	-/90/60	2
4 x TPS in 30mm uPVC Conduit	Double PROMASEAL [®] Conduit Collar (CFC32)	-/90/30	-/90/60	2
1 x 2.5mm ² TPS Cable	PROMASEAL [®] A	-/90/30	-/90/60	3
4 x 2.5mm ² TPS Cable	PROMASEAL [®] A	-/90/30	-/90/60	3
3 x CAT6 Data cable	PROMASEAL [®] A	-/90/30	-/90/60	3
50mm Copper	PROMASEAL [®] A + PROMASEAL [®] SupaWrap	-/90/30	-/90/60	4
19mm Copper + 13mm FR Insulation	PROMASEAL [®] FlexiWrap	-/90/30	-/90/60	5
Blank Opening (800 x 450mm)	PROMASEAL [®] Bulkhead Batt	-/90/30	-/90/60	6

Install 1: PROMASEAL® Wall Collar with services



1. KOROK® Panel
2. PROMASEAL® -Wall Collar
3. PROMASEAL® A Acrylic Sealant
4. uPVC Pipe (40, 50 or 100mm)
5. PE Pipe (40 & 100mm)
6. 1/4 & 1/2 PE insulated PairCoil + power cable
7. PROMASEAL® Grafitex Paste (GRAF4T)

1. Cut hole in KOROK® Panel to suit collar.

- FCW40=88mm OD (for uPVC and PE only)
- FCW50=102mm OD (for uPVC and Paircoil only)
- FCW100=163mm OD (for uPVC and PE only)

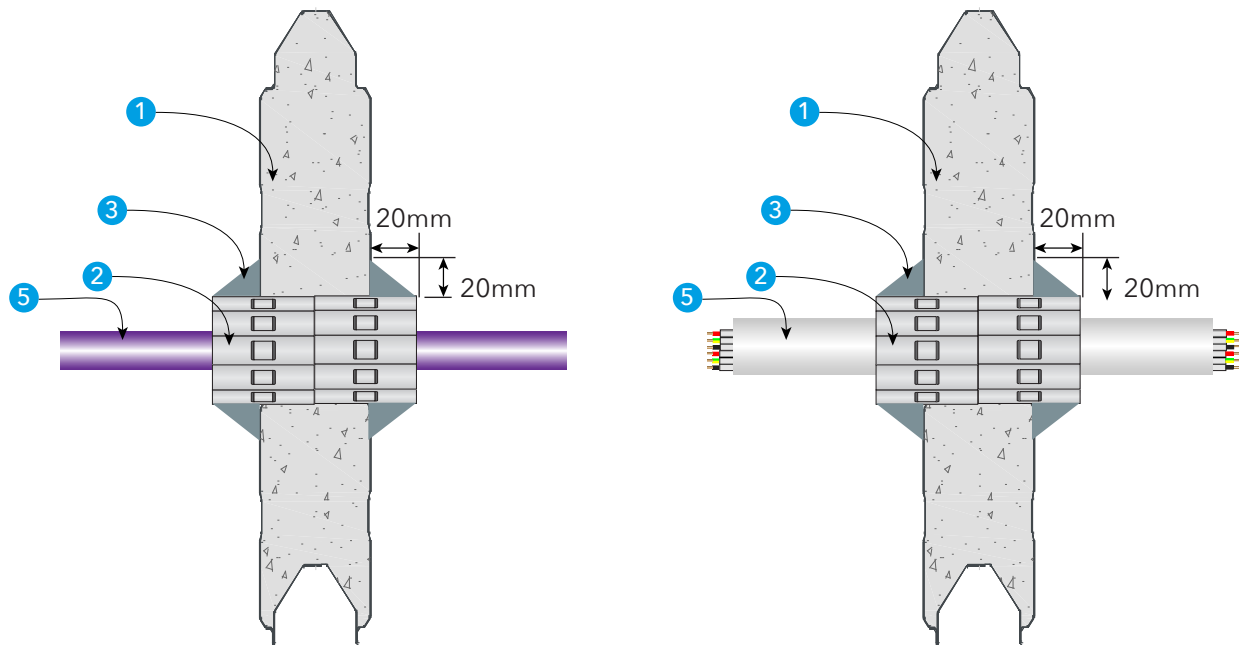
2. Install collar around service and centralise in the wall.

3. Seal the exposed part of the collar on each face with PROMASEAL® A.

Nominal cone size is 35 x 35mm

4. For the PairCoil + cables only. Fill gaps between services and collar with PROMASEAL® Grafitex

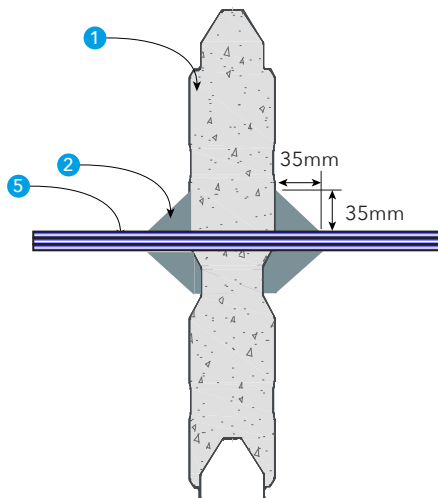
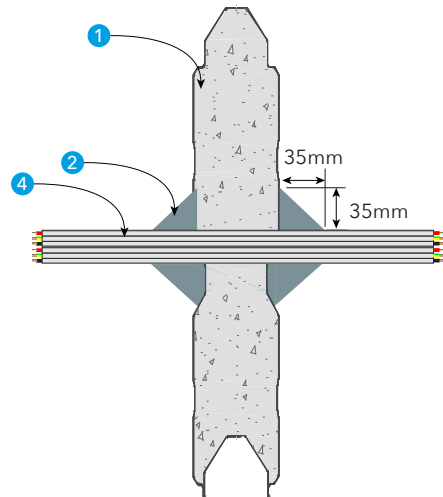
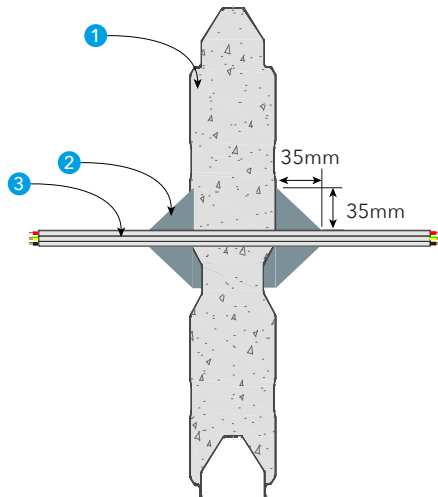
Install 2: Double PROMASEAL® Conduit Collar with services



1. KOROK® Panel
2. PROMASEAL® Conduit Collar (Doubled)
3. PROMASEAL® A Acrylic Sealant
4. PEX Pipe - 20mm OD
5. uPVC Conduit - 30mm OD) filled with 4 x TPS Cables

1. Cut 64mm OD hole in KOROK® Panel.
2. Join two PROMASEAL® Conduit Collars by bending fixing tabs flat and screwing together.
3. Seal the exposed part of the collar on both faces with PROMASEAL® A.
Nominal Cone size is 20 x 20mm

Installation 3: PROMASEAL® A with cables



1. KOROK® Panel
2. PROMASEAL® A Acrylic Sealant
3. 1 x 2.5mm² TPS cables
4. 4 x 2.5mm² TPS cables
5. 3 x CAT6 data cables

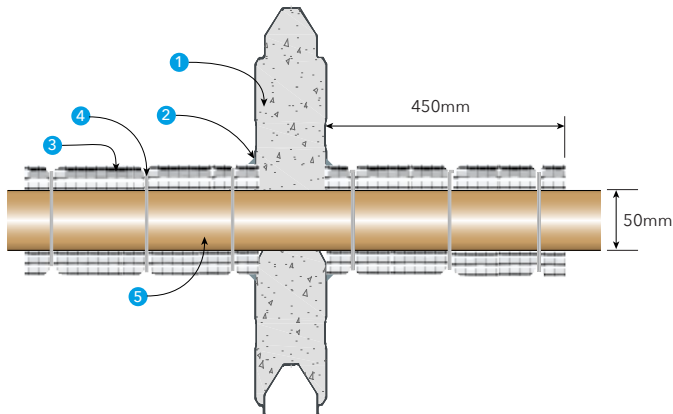
1. Cut hole in KOROK® Panel to suit cable bundle size.

- 1 x TPS = 13mm OD
- 4 x TPS = 22mm OD
- 3 x CAT6 = 13mm OD

2. Seal the exposed part of the collar on each face with PROMASEAL® A.

Nominal cone size is 20 x 20mm.

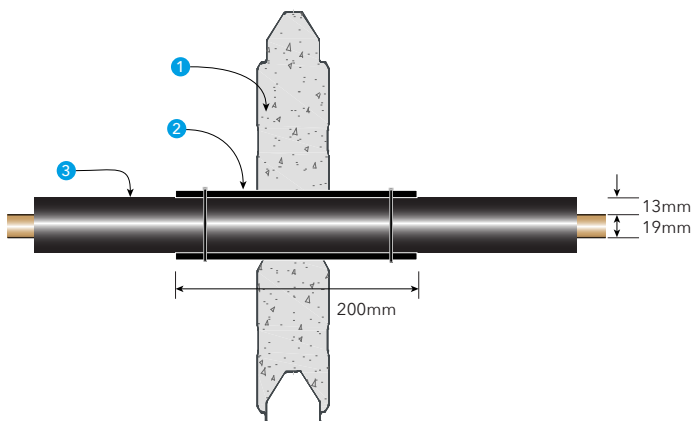
Install 4: Copper Pipe



1. KOROK® Panel
2. PROMASEAL® -A Acrylic Sealant
3. PROMASEAL® SupaWrap - 40mm thick
4. Stainless Steel Cable Ties - 3 per side
5. Copper or steel pipe

1. Cut 64mm OD hole in KOROK® Panel
2. Seal gap between copper pipe and KOROK® Panel with 10mm x 10mm fillet of PROMASEAL® A
3. Cut PROMASEAL® SupaWrap to allow for 450mm length on each face
4. Secure PROMASEAL® SupaWrap to pipe with three stainless steel cable ties
5. Seal PROMASEAL® SupaWrap to KOROK® panel with 6mm x 6mm cone of PROMASEAL® A

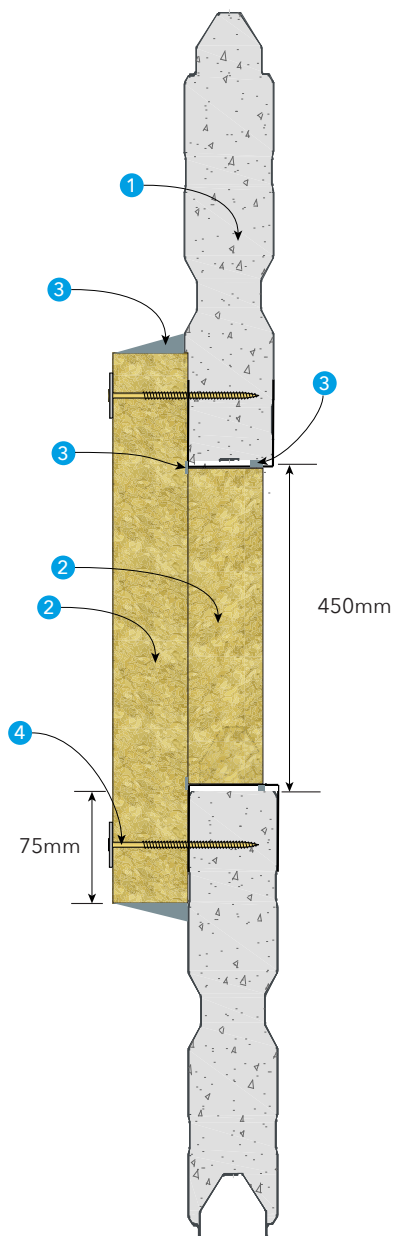
Install 5: Insulated Copper Pipe



1. KOROK® Panel
2. PROMASEAL® -SupaWrap - 40mm thick
3. PROMASEAL® -FlexiWrap - 200mm long
4. Plastic cable ties - 1 per side
5. Promat Reinforced Aluminium Foil Tape
6. Insulated Copper pipe

- 1 Cut 64mm OD hole in KOROK® Panel
- 2 Install PROMASEAL® FlexiWrap into gap between pipe insulation and KOROK® panel. Ensure it protrudes by 75mm on each face
- 3 Secure PROMASEAL® FlexiWrap to pipe with two plastic cable ties
- 4 Secure PROMASEAL® SupaWrap to pipe with three stainless steel cable ties
- 5 Seal PROMASEAL® SupaWrap to KOROK® panel with 6mm x 6mm cone of PROMASEAL® A

Install 6: Blank Opening



1. KOROK® Panel
2. PROMASEAL® Bulkhead Batts
3. PROMASEAL® A Acrylic Sealant
4. 8-10g x 75mm Needle Point Chipboard Screws with M6 washer

1. Cut opening in KOROK® panel up to 450mm high x 800mm wide.
2. Line opening with KOROK® C-Track to all sides
3. Cut first layer of batt to suit opening size and friction fit into opening.
4. Cut second layer so that it is 75mm oversized of the opening on all sides.
5. Fix to one face of KOROK® Panel at 200mm centres into the C-Track
6. Apply PROMASEAL® A Acrylic Sealant between track and first batt. Between KOROK® Panel and first batt before applying second layer and to cut edges of second layer.

Etex Australia

New Zealand Contact

☎ +64 027 443 6626

✉ PAPL.mail@etexgroup.com

New Zealand Distributor

COMFORTECH

☎ 0800 45 4000

✉ www.comfortech.co.nz

promat.com



KOROK® General & Technical Enquiries

☎ 0800 773 777

☎ 07 849 7062

✉ info@korok.com